

## UPDATE PLEO™ SOFTWARE 1.1 (MICROSOFT WINDOWS XP AND VISTA)

**Note:** Pleo Updater is intended for use only with the 32-bit version of Microsoft Windows XP or Vista. The 64-bit versions of Microsoft Windows XP or Vista do not support Pleo Updater.

Follow the Instructions below to update your Pleo's software.

### DOWNLOAD INSTALLER:

1. If you have not already done so, click the Windows icon on Pleoworld to download the installer for Pleo Updater.
2. On the File Download Security Warning screen, click "Save" (Fig. 1).
3. Save the file to your desktop (Fig 2).

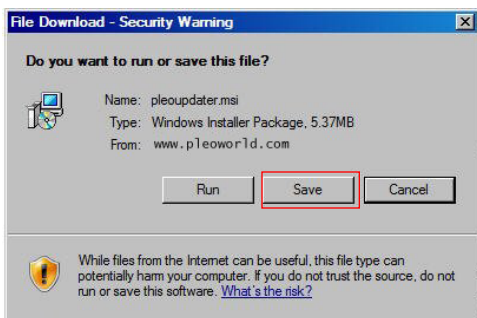


Figure 1: File Download Security Warning

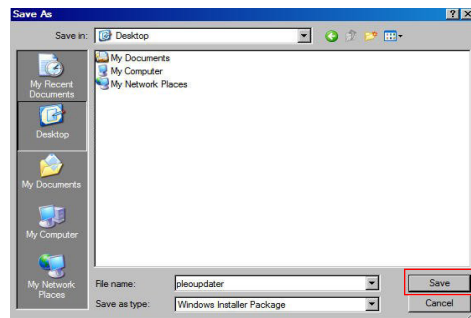


Figure 2: Save to Desktop

4. When the download is complete, click "Run" to begin the software installation (Fig 3), or locate and double-click the Pleo Updater installer icon on your desktop (Fig 4).

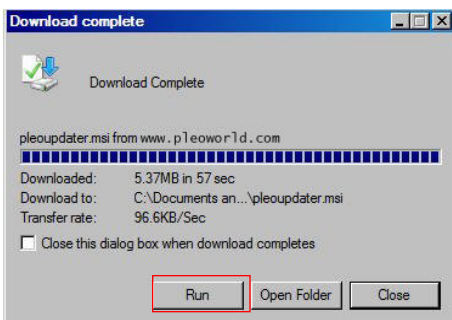


Figure 3: Download complete

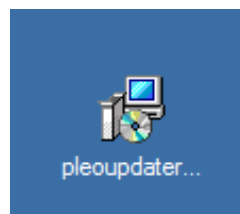


Figure 4: Pleo Updater installer icon

## DOWNLOAD INSTALLER CONT.:

5. Click “Run” on the Unknown Publisher Warning screen (Fig 5).
6. Click “Continue Anyway” on the Windows Logo Test warning screen (Fig 6).

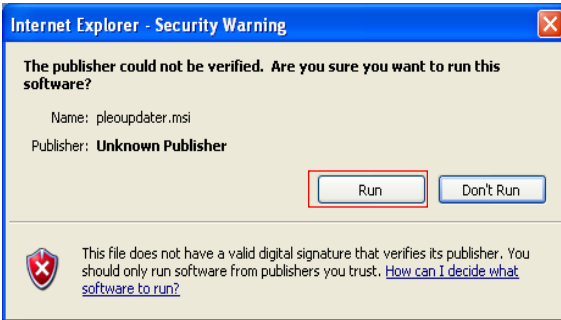


Figure 5: Unknown Publisher Warning (XP)



Figure 6: Windows Logo Test Warning (XP)

**Note:** UGOBE is in the process of completing the testing requirements for Microsoft certification. It is completely safe to disregard the security warnings at this time.

## Vista Users: Security screens are different in Vista:

5. Click “Allow” on the Unknown Publisher warning screen (Fig 7).
6. Click “Install” on the Windows Security warning screen (Fig 8).

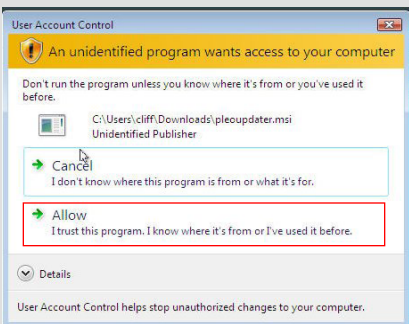


Figure 7: Unknown Publisher Warning (Vista)

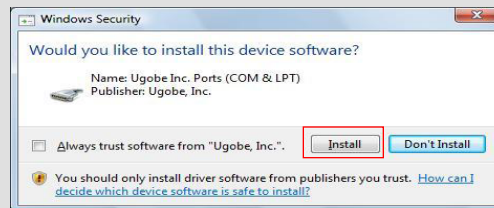


Figure 8: Windows Logo Test Warning (Vista)

## CONNECT PLEO:

7. Connect Pleo to your computer with a USB 2.0 A to Mini-B data cable. Plug the Type A (large) connector into your computer and the Mini-B (small) connector into the USB port in Pleo's belly. Before connecting Pleo, make sure Pleo is switched ON and that the battery is charged.

**Note:** Pleo will accept the update in any position, but it may be easiest to lay Pleo on his side. He won't mind, and his USB port and ON/OFF switch are easiest to access when he's lying down.

**Vista Users:** Proceed to step 12. You will not experience steps 8 – 11.

## INSTALL NEW HARDWARE DRIVER:

8. Select “Install the software automatically” in the Found New Hardware Wizard Welcome screen and click “Next” to continue (Fig 9). This process may take several minutes.

**Note:** In some situations, the operating system will display a Found New Hardware Wizard Welcome screen that asks: “Can Windows connect to Windows Update to search for software?” Select “No, not this time.” Then, click “Next.”

9. Click “Continue Anyway” on the Windows Logo Test Warning screen (Fig 10).

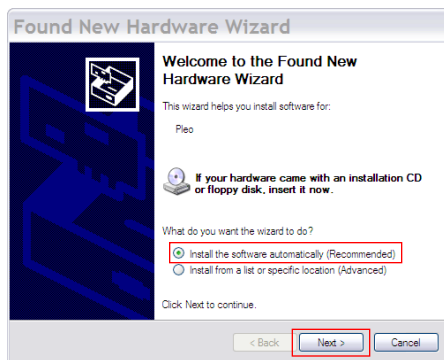


Figure 9: Install New Hardware Wizard Welcome

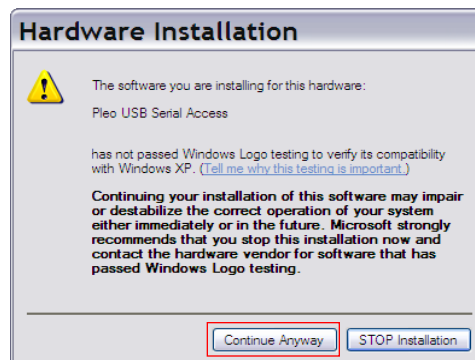


Figure 10: Microsoft Logo Test warning

10. The Found New Hardware Wizard will install the software (Fig 11).

11. Click “Finish” on the completion screen (Fig 12).



Figure 11: Installing new software

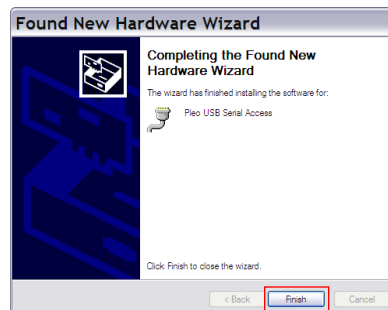


Figure 12: New Hardware Wizard completion

## UPDATE PLEO™ SOFTWARE:

12. Double-click the Pleo Updater application icon on your desktop to begin the update process (Fig 13) or locate the icon in the Pleo Updater folder within your Program Files.

13. The Pleo Updater confirmation screen reminds you to connect Pleo to your computer (Fig 14). When you are sure this has been done, click “Continue.”



Figure 13: Updater application icon

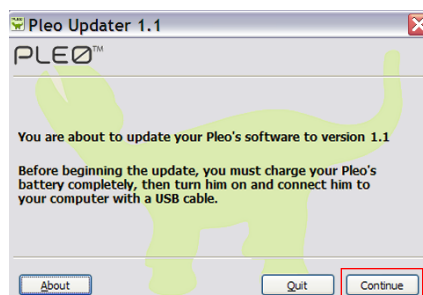


Figure 14: Confirmation screen

14. When your system recognizes Pleo, click “Update” to begin the update process (Fig 15).

15. Click “OK” to acknowledge the software license notification (Fig 16).



Figure 15: Pleo found



Figure 16: License Agreement notification

16. Use the scroll bar to read the Software License Agreement, then click “I Agree” to continue. (Fig 17).

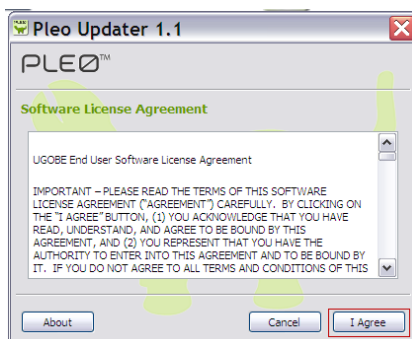


Figure 17: Software License Agreement

## UPDATE PLEO™ SOFTWARE CONT.:

**Vista Users:** Proceed to step 18. You will not experience step 17.

**XP Users Important:** At this point, Pleo will reset and Windows will determine him to be a new hardware device. You must complete the New Hardware process again. If you do not see the New Hardware Wizard screen, check to see if it is behind the Pleo Updater screen.

**Note:** In some situations, the operating system will display a Found New Hardware Wizard Welcome screen that asks: *Can Windows connect to Windows Update to search for software?* Select “No, not this time.” Then, click “Next.”

17. Click “Next” to continue with the Second New Hardware recognition process (Fig 18). Follow the New Hardware wizard through to completion.

18. The update begins and indicator screens will show the progress as software transfers to Pleo (Fig 19). This process may take up to 5-10 minutes to complete. Do not exit the program while the transfer is in progress!

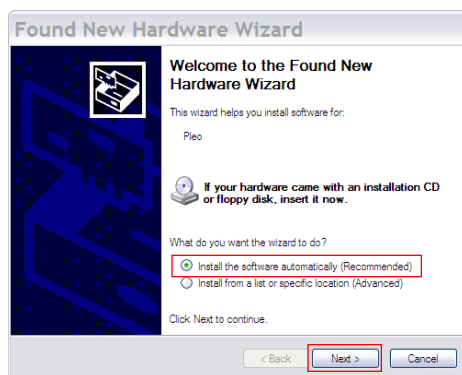


Figure 18: Second New Hardware Wizard

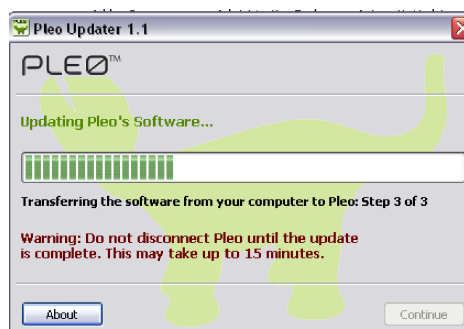


Figure 19: Software transfer indicator

19. Click “Quit” to complete the software update (Fig 20).

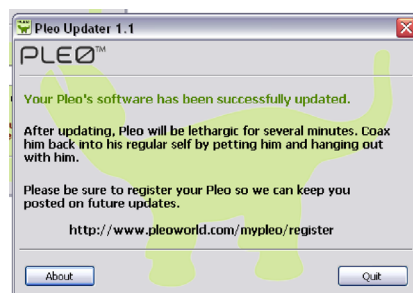


Figure 20: Update complete

20. When the update is complete, your Pleo will automatically restart and wake up with the new software in place!

**Note:** When Pleo's software is updated, he will be slow and groggy for a few minutes.

## WHAT'S NEW IN PLEO 1.1

- Pleo's attitude and emotions change based on how you interact with him. A happy Pleo is one who receives a lot of attention while a sad Pleo is one who is neglected or abused.
- Pleo may occasionally get sick - coughing and sneezing! Nurse him back to health by giving him lots of love and attention and feeding him his leaf.
- Pleo has learned a new trick - he knows how to sit! Try holding his chin and rear at the same time. He'll then pull his front and back feet together. Give him a nudge back by pushing down on his backside; don't forget to help him up when you want to keep playing.
- Petting Pleo on his chin for a long period of time will coax him to sing a variety of melodies, after which he will remember the song he stopped on and may use it for other things such as calling for attention.
- Pleo now recognizes his training leaf, and when he sees it he may open his mouth or call for it with a little panting sound.
- Pleo is tackling more difficult terrain such as high carpet by using a specially triggered "high-step" mode. To trigger this new walk, hold Pleo's front legs and touch his Pleo button. He will remain using this walk until you reverse the command by touching the same sensors again or by powering Pleo off and then on again.
- Pleo has been picking up some strange habits as of late too - we've seen itchy feet and excessive chewing. **What's your Pleo up to?**

When updated to 1.1, Pleo needs new versions of the Holiday and Love-struck downloads. You can get the 1.1 compatible downloads from the 1.1 update page.

If you've been using third party applications such as YAPT or MySkit, you will also need to use a 1.1 compatible version. Check with the individual third party sites for those updates.

## TO UNINSTALL:

### 1. Windows XP:

- a. Click “Start” and choose “Control Panel”
- b. Select “Add or Remove Programs”

### Windows Vista:

- a. Click “Start” and choose “Control Panel”
- b. Select “Programs”
- c. Select “Programs and Features”

### 2. Select and Remove: Pleo Updater 1.1 and Windows Driver Package - Ugobe Inc. (usbser) Ports (Fig 21)

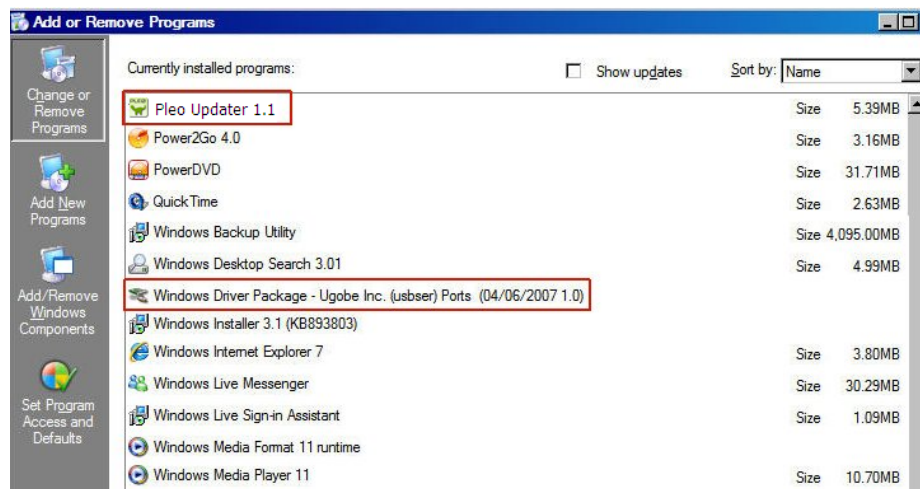


Figure 21: Add/Remove Pleo Updater files

The first deletes the Pleo Updater utility and support files, the second uninstalls the ugobe.inf, libusb0.sys and libusb0.dll files.

**Important:** The libusb0.sys and libusb0.dll files are common open-source drivers. Do not delete these files unless you are sure they are not needed for other applications.